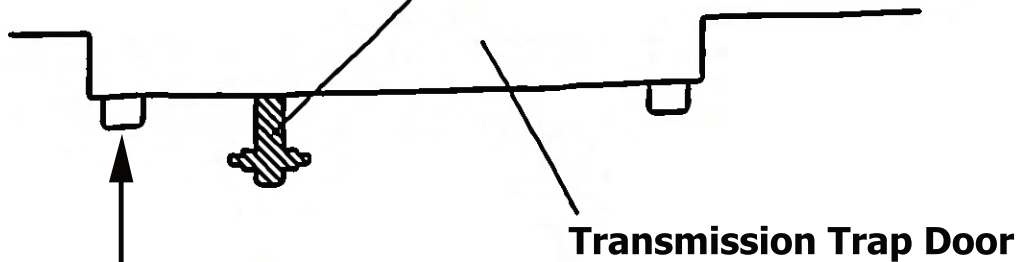
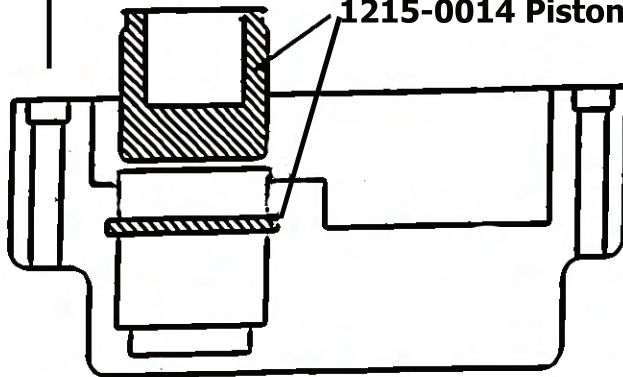


Clutch Release Pushrod

NOTE: Remove oil slinger from end of pushrod
(Also applies to ART 4 Spd Hyd Kicker Cover)

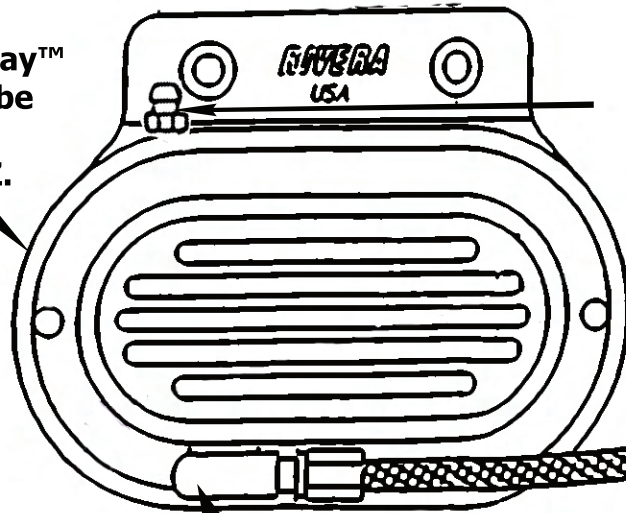


1215-0014 Piston & Oring Kit



**HYDRAULIC END COVER
1215-0001 & 1215-0005**

Fill with Bel-Ray™
Trans. gear lube
(85/140)
Approx. 24 OZ.



Line fitting thread pitch is 3/8 x 24

The Speed Bleeder® (1101-0025) is directional, pressure bleeding must be used on the bleeder itself. Do not bleed from the master cylinder.

Screw in the Speed Bleeder® into the wheel cylinder or caliper until it seats. Unscrew the Speed Bleeder® 1/4 to 1/2 turn. Slowly pump the brake pedal approximately 4-5 times. (You do not have to close the bleeder screw between pumps.) A one way check valve lets the air and fluid out when the pedal is pressed and closes between pumps preventing new air from reentering the system between pumps. After bubble-free fluid comes out of the Speed Bleeder® screw, close the Speed Bleeder® until it seats.

- ① Make sure m/c reservoir is absolutely clean!
- ② Use only DOT 5 brake fluid
- ③ Unit should be installed and adjusted by a qualified mechanic familiar with the proper settings of a hydraulic clutch system.

RIVERA PRIMO INC. ~ 12450 WHITTIER BLVD. ~ WHITTIER, CA 90602
562-907-2600 ~ www.riveraprimo.com ~ info1@riveraprimo.com