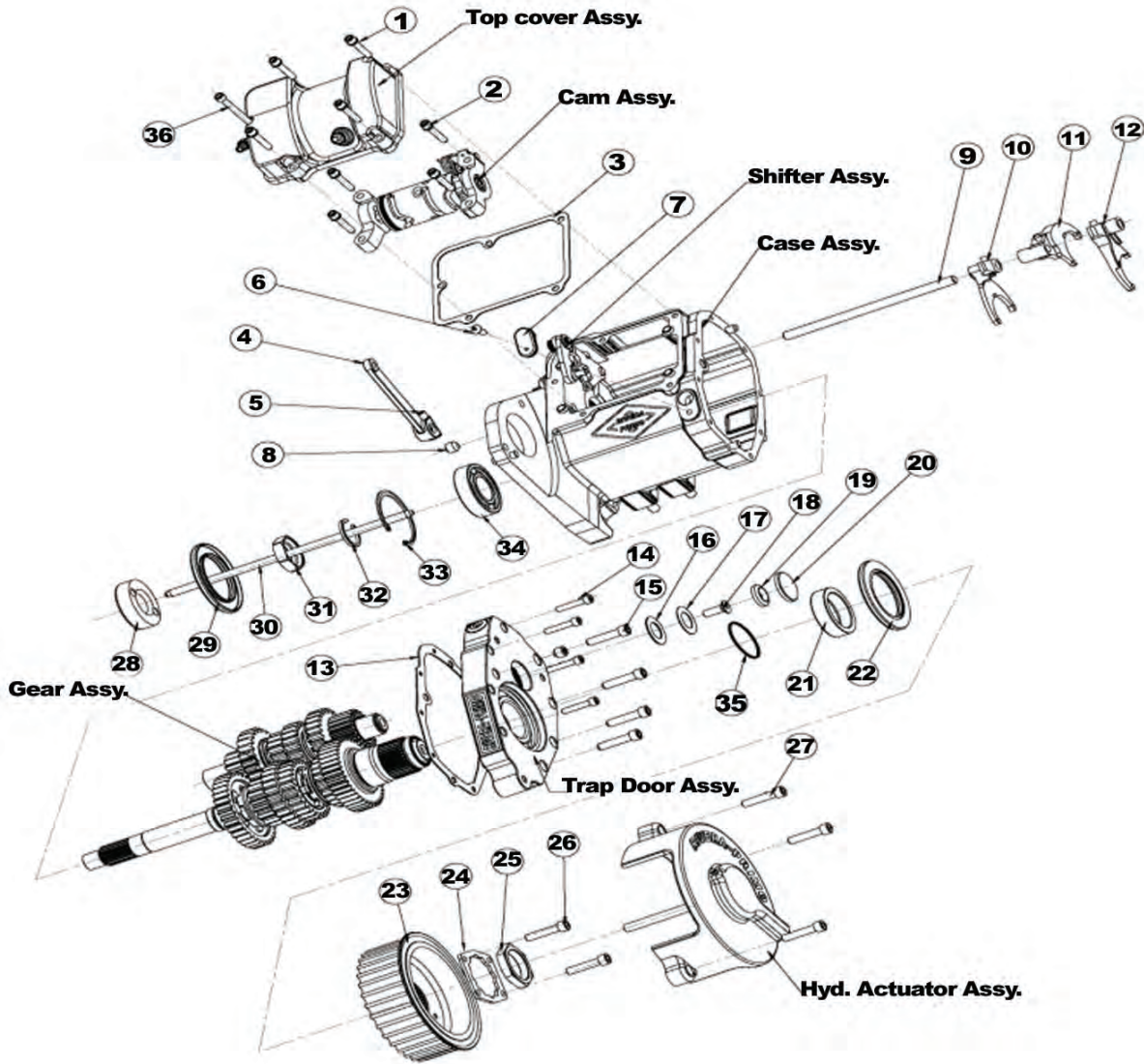
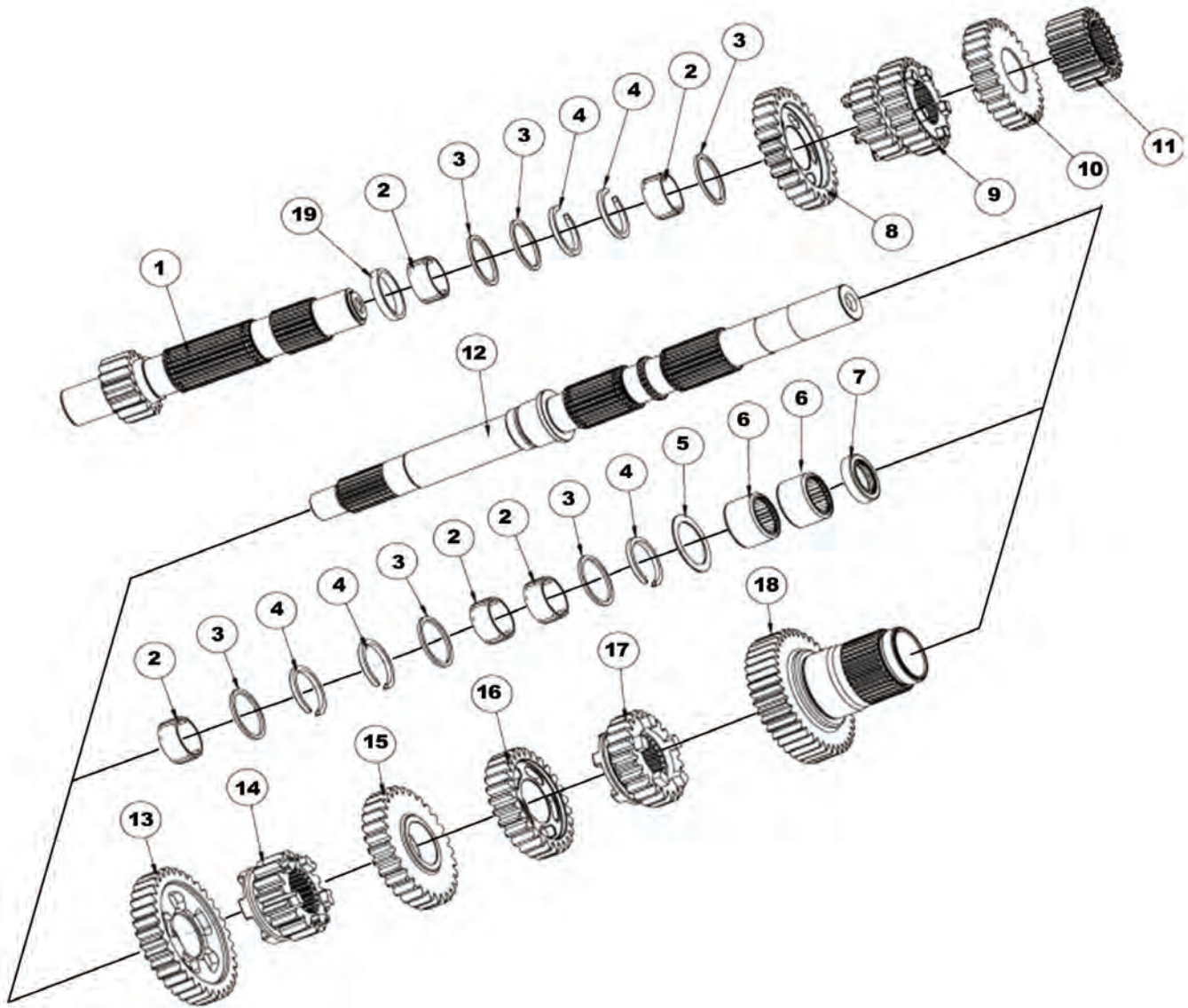


POWERDRIVE RSD TRANSMISSION COMPLETE ASSY. EXPLODED VIEW



Pic #	RPI Part #	Description	QTY	Pic #	RPI Part #	Description	QTY
1	1100-0080	1/4-20*1 1/4" HSCS	4	18	1100-0035	FLAT HEAD SCREW	1
2	1100-0081	1/4-20*2 1/4" HSCS	1	19	1217-0705	WASHER C/S	1
3	1094-0018	GASKET TOP COVER	1	20	1217-0700	OIL SEAL	1
4	1217-0600	LEVER	1	21	1217-0603	PULLEY SPACER	1
5	1100-0017	5/16-24*1 SHCS	1	22	1179-0050	MAIN OIL SEAL	1
6	1100-0030	ROUND HEAD BOLT	1	23	2223-0015	SPROCKET 32T	1
7	1217-0614	DEMMY PLUG ASS'Y	1	24	3217-0030	NUT LOCKING PLATED	1
	1148-0012	OIL RING	1	25	3223-0002	SPROCKET NUT	1
8	1100-0020	OIL HOLE COVER SPACER	1	26		1/4*20 5/8 HSCS	2
		1/2-20*1/2 SET SCREW	2	27		BOLT HEX SOCKET	3
9	1219-0702	FORK SHAFT	1	28	1217-0710	SPACER CASE	1
10	1216-0400	FORK , 2ND MS	1	29	1179-0050	OIL SEAL	1
	1217-0613	FORK PIN	3	30	1217-0616	PUSH ROD CENTER	1
11	1216-0401	FORK, 3ND C/S	1	31	1217-0711	MAIN SHAFT NUT	1
12	1216-0402	FORK, 4-5 MS	1	32	1217-0712	RETAINING RING	1
13	1094-0006	CASE MAIN GASKET	1	33	1101-0050	SNAP RING	1
14	1100-0027	1/4-20*2 1/4 SHCS	3	34	1018-0023	BEARING	1
15	1100-0028	1/4-20*1 1/4 SHCS	4	35	1148-0013	QUAD SEAL-PACKING	1
16		WASHER	1	36		1/4-20*1 1/4" HSCS	1
17	1217-0708	WASHER	1				

POWERDRIVE RSD TRANSMISSION GEAR CLUSTER EXPLODED VIEW



Pic #	RPI Part #	Description	QTY	Pic #	RPI Part #	Description	QTY
1	1219-0602	COUNTERSHAFT	1	11	1216-0058	5TH GEAR C/S	1
2	1018-0007	BEARING	5	12	1219-0700	MAIN SHAFT	1
3	1217-0703	WASHER	6	13	1216-0205	6TH GEAR M/S	1
4	1101-0053	RETAINING RING	5	14	1216-0204	1ST GEAR MAIN SHAFT	1
5	1217-0611	WASHER	1	15	1216-0203	4TH GEAR MAIN SHAFT	1
6	1018-0008	BEARING	2	16	1216-0202	3RD GEAR MAIN SHAFT	1
7	1179-0052	OIL SEAL	1	17	1216-0201	2ND GEAR MAIN SHAFT	1
8	1216-0207	1ST GEAR C/S	1	18	1216-0059	5TH GEAR MAIN SHAFT	1
9	1216-0200	3RD/4TH GEAR C/S	1	19	1217-0704	WASHER	1
10	1216-0208	2ND GEAR C/S	1				